

PREMIER SERIES GAS GRILLS



INSTALLATION INSTRUCTIONS FOR YOUR LYNX SIDE BURNERS

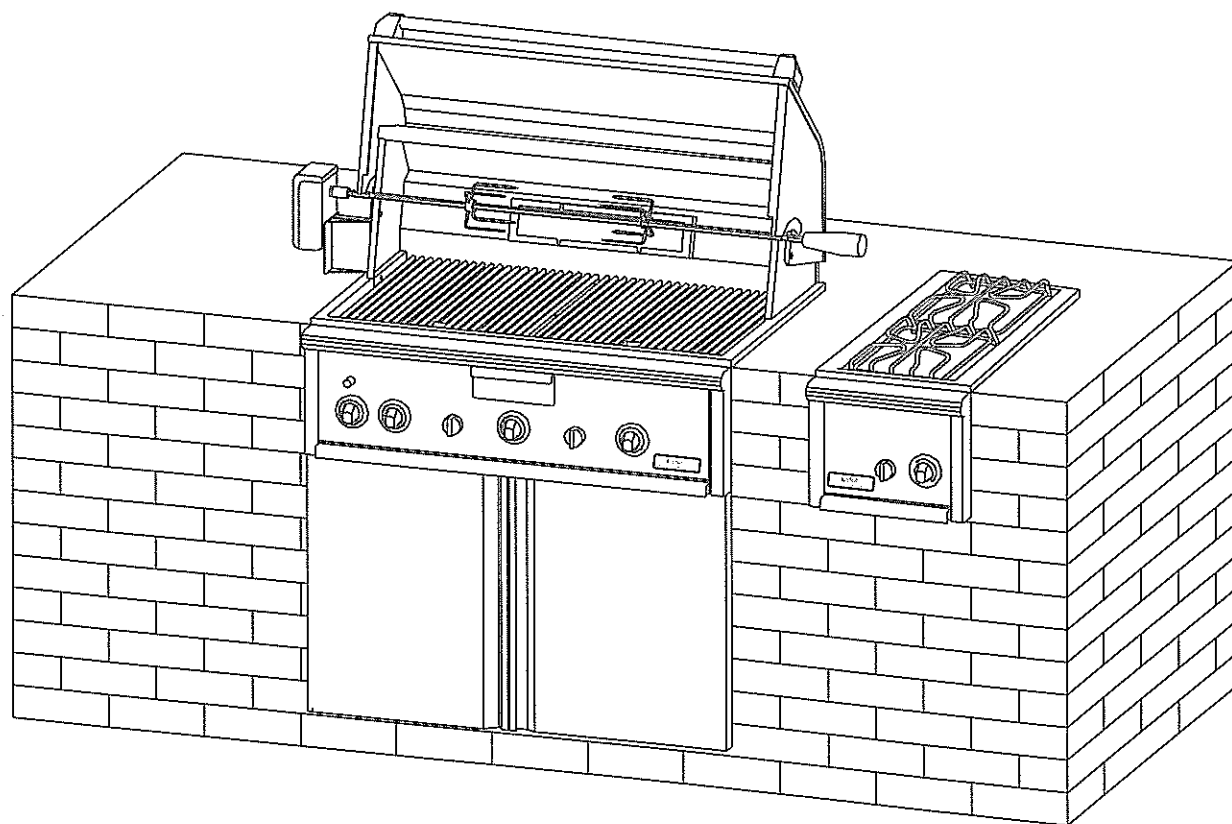
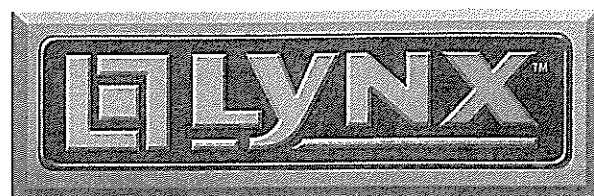
Our line of gas grills is indicative of the standard features that will be effective in the craftsmanship and innovation of Lynx Kitchen Products in the finest

A MESSAGE TO OUR CUSTOMERS

Thank you for choosing Lynx for your new gas side burner. With proper use and care, we're confident that this Premier Series side burner will provide years of trouble-free service. Careful attention has been put into every detail of this side burner, and by reading this entire manual before your first use you will be assured of maximum performance. Please keep it in a convenient location so it will be available to answer any future questions. Should your Lynx side burner change ownership, please ensure that the new owner receives this manual.

We love to hear from our new customers. Please feel free to contact us with questions or problems, or to share a new recipe. Please include the model number of your side burner in any correspondence.

Thanks again for choosing Lynx. Enjoy!



Your Lynx side burner is made from the highest quality, rust resistant 304 series stainless steel. During normal use, areas of the side burner grates may discolor due to the intense heat given off by the burners. This is normal with all stainless grates and is not detrimental to the performance of the unit.

SERVICE & LIMITED WARRANTY

If there is a problem, contact the Lynx National Service Center toll-free at (888) 478-5969. Only authorized agencies can perform warranty service. Lynx is not responsible for the cost of service calls to:

1. Correct the installation.
2. Instruct you in the use of the unit.
3. Repair the unit when used for other than normal home use.
4. Repair damage resulting from misuse, abuse, alteration, accident, hostile environment, improper installation or installation not in accordance with local codes.
5. Replace rotary igniters.
6. Correct normal adjustments or settings due to improper installation, commissioning or local gas supply properties.

Record date of purchase

Dealer from whom purchase was made:

LIMITED FIVE-YEAR WARRANTY

Lynx warrants the structural integrity of the interior body parts, exterior, for a period of five years from the date of purchase.

This warranty is limited to replacement of the component should structural deterioration occur to the degree of non-performance of the part. Replacements will be F.O.B. Lynx Professional Kitchen Products in Commerce, CA. Lynx is not liable for transportation costs, export duties or installation costs.

LIMITED ONE-YEAR WARRANTY

Lynx warrants all other Side Burners components to the original purchaser to be free from factory defects in material and workmanship for a period of one year from the original date of purchase.

This warranty will not apply and Lynx will not assume responsibility for damage resulting from misuse, abuse, alteration, accident, hostile environment, flare-up fires, improper installation or installation not in accordance with local codes.

No labor charge will be made for repair or replacement of parts during the first 90 days after purchase.

This warranty is in lieu of all other warranties, expressed or implied, and all other obligations or liability in connection with the sale of this appliance. Neither this warranty nor any other warranty expressed is assumed for any incidental or consequential damages. Some states do not allow limitations on how long an implied warranty lasts, or the exclusions of or limitations on consequential damages, so the above limitations may not apply to you. This warranty gives you specific legal rights, and you may also have other rights which vary from state to state.

Replacement parts can be obtained from the Lynx National Service Center by calling (888) 478-5969 or from the factory at (888) 289-5969.

Before calling for service, make sure you have your model and serial number, date and proof of purchase available. The serial number can be found on the product body.

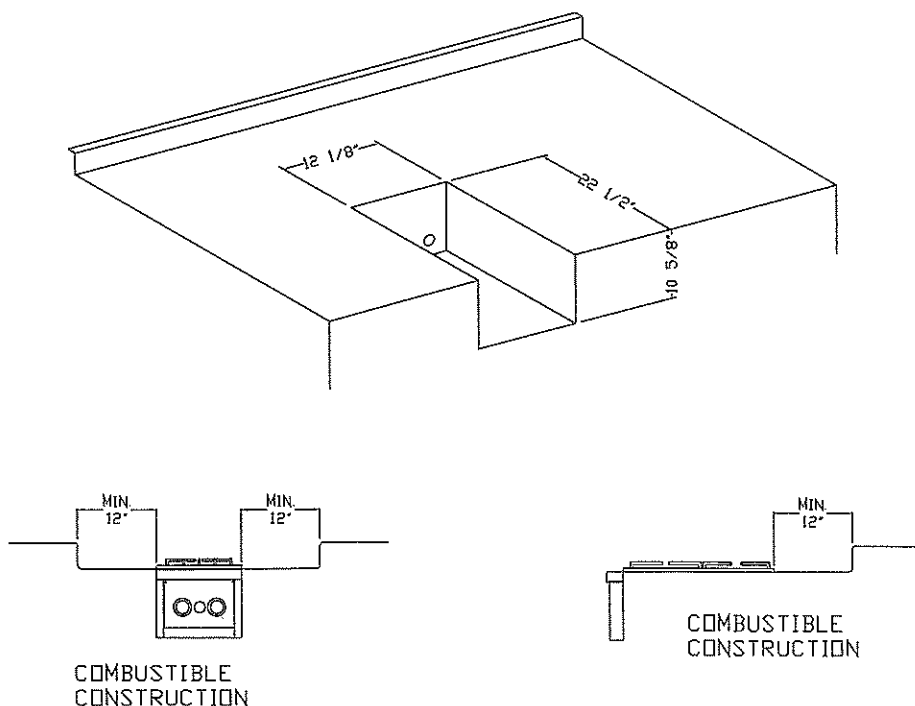
SIDE BURNER INSTALLATION INSTRUCTIONS

LYNX SIDE BURNERS

MODELS LBQ-SB1, LBQ-SB2, LBQ-CB1, LBQ-CB2

LOCATING THE LYNX SIDE BURNER

- The Lynx Side Burner is designed and certified for outdoor installation only.
- Do not install the side burner under combustible construction.
- Do not use in garages, sheds or other enclosed areas.
- Never install the unit in a windy area.
- For built-in installation, maintain minimum clearances of 12 inches at the back and 12 inches at the sides above the cooking surface and combustible construction. If storing gas cylinders beneath the unit, make sure adequate ventilation is provided in the storage compartment in the event of a gas leak.
- Keep area surrounding the unit free from combustible materials, gasoline and other flammable liquids or vapors.
- Do not obstruct the flow of combustion and ventilation air to the unit.
- Do not light side burners with cover in place.
- Do not replace cover while the side burner is still hot.



GAS HOOK-UP

Identify the type of gas (natural gas or L.P.) set for the appliance by checking the rating plate. An "X" is marked next to the type of gas used. Also, the letters of the serial number will either be NG or LP indicating the type of gas.

Gas conversion kits are available from your dealer. When ordering, specify the model number and the type of gas you are converting to.

All gas connections should be made by a competent technician and in accordance with local codes and ordinances. In the absence of local codes, the installation must comply with the National Fuel Gas Code ANSI Z223. 1-1094.

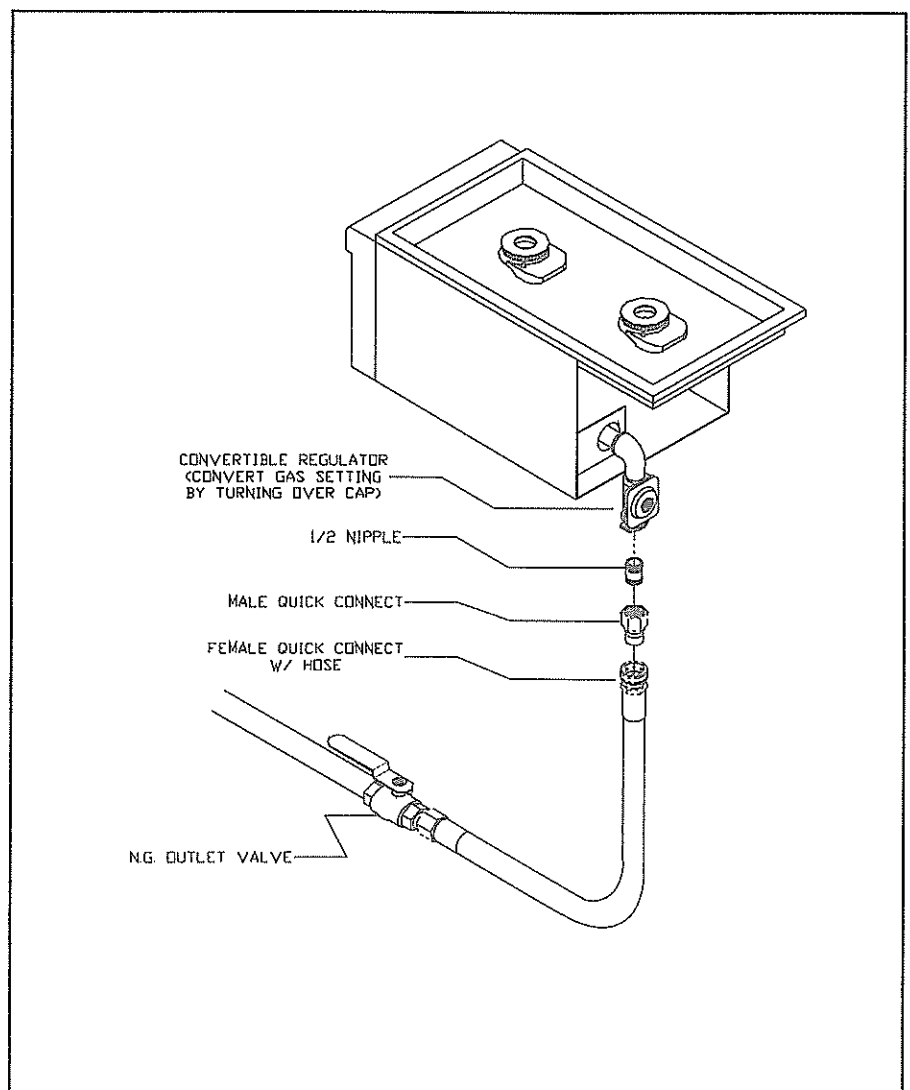
NATURAL GAS HOOK-UP

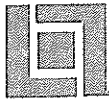
OPERATING PRESSURE: 4.0" W.C.

SUPPLY PRESSURE: 5" TO 14" W.C.

Check with local gas utility company or with local codes before installing supply lines. To put fittings together, use threading compound on male threads only. Be sure to use only an approved sealant that is resistant to the effects of L.P. gases. Use a second pipe wrench to hold the grill inlet pipe to avoid shifting any internal gas lines of the unit.

The regulator has an arrow directly on it. This arrow must point in the direction of the gas flow - towards the side burner and away from the gas supply. An installer-supplied gas shut-off valve must be installed in an easily accessible location.





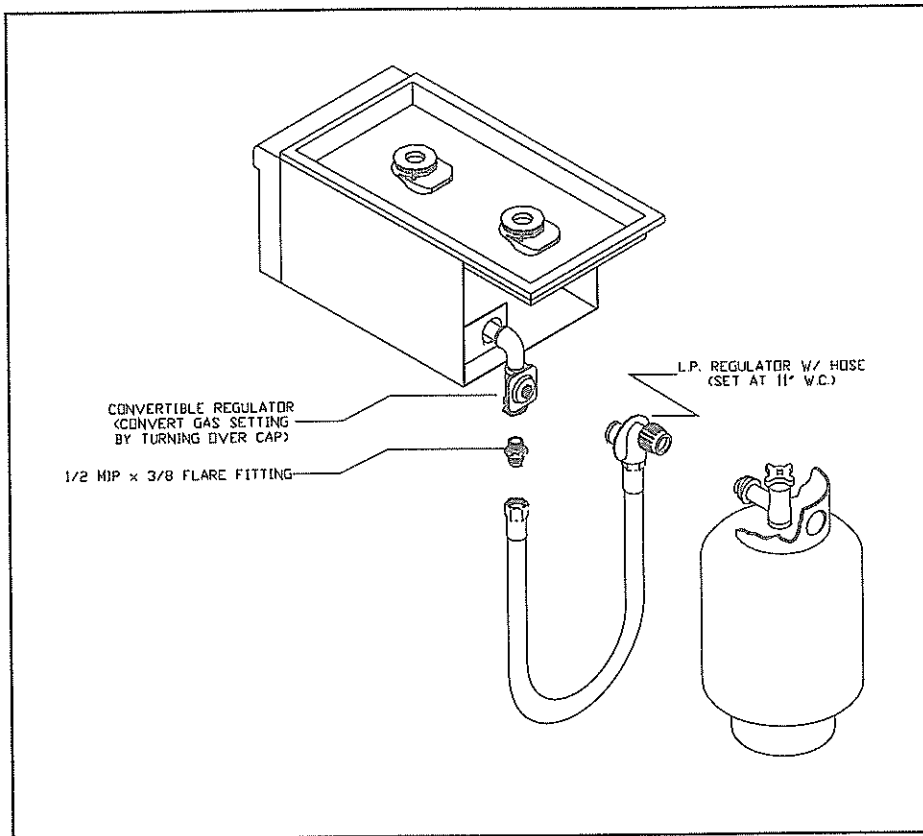
L.P. GAS HOOK-UP

OPERATING PRESSURE: 10" W.C.

SUPPLY PRESSURE: 11" TO 14" W.C.

The side burner comes equipped with a regulator designed for plumbed-in L.P. gas supply. If using plumbed-in L.P. gas, make sure the supply pressure is not more than 14" W.C. Install the regulator with the arrow pointing in the direction of the gas flow - towards the appliance. An installer-supplied gas shut-off valve must be installed in an easily accessible location.

If using an L.P. gas tank, a high pressure L.P. tank regulator is required. Because the outlet pressures of L.P. tank regulators are set to 11" W.C., the appliance regulator must be used to maintain the supply pressure to 10" W.C. Connect the regulator/hose assembly following the manufacturer's instructions.



AFTER INSTALLING THE SIDE BURNERS AND CONNECTING ALL THE FITTINGS TO A GAS LINE, LEAK TESTING IS NECESSARY.

NEVER LEAK TEST WHILE BURNERS ARE IN USE. EXTINGUISH ALL OPEN FLAMES AND DO NOT SMOKE DURING TESTING.

LEAK TEST SOLUTION:
1 PART LIQUID SOAP
1 PART WATER

Mix soap with water in a spray bottle. It is convenient to keep this bottle near the gas shut off for future testing.

Make sure all control valves are in the "off" position. Turn the gas supply on. Spray all key areas shown in the diagram at left. Soap bubbles will appear if a leak exists. If a leak is found, immediately turn off gas supply. Tighten any leaking fittings, turn gas supply back on and recheck. If the leak persists, turn gas supply off and call your local gas utility company or Lynx National Service Center.

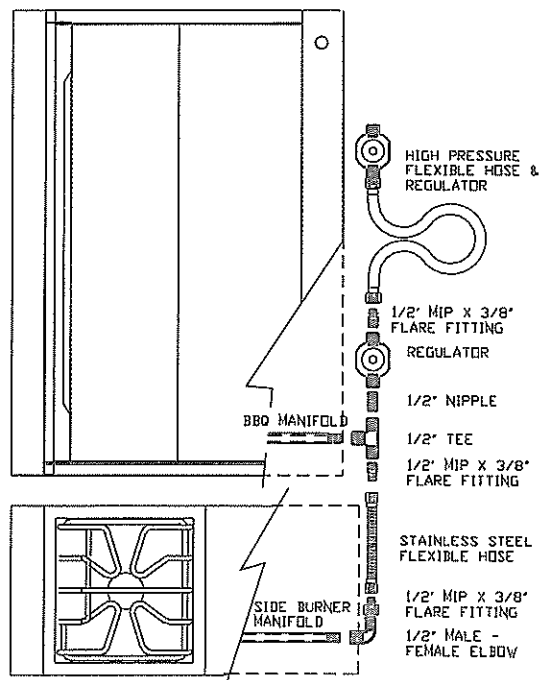
INTERCONNECTING SIDE BURNER & LYNX GRILL

INTERCONNECTING THE SIDE BURNER WITH THE LYNX GRILL

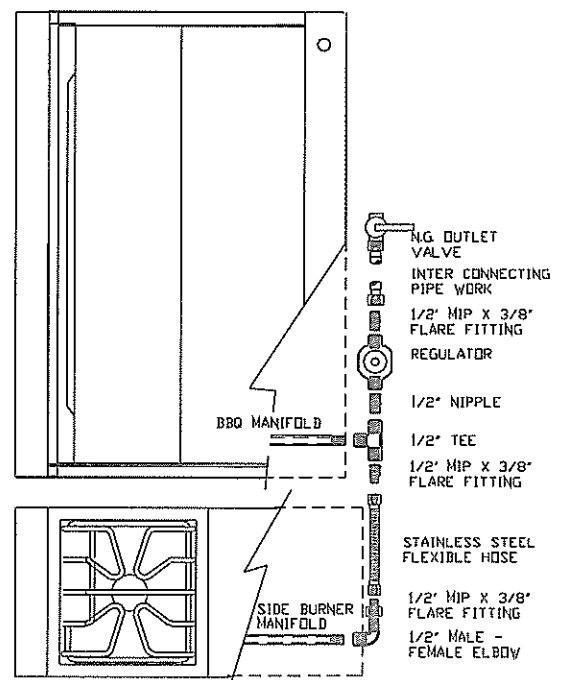
The illustration shows interconnecting the appliance with a Lynx Grill. Note that only one appliance regulator is required to supply gas to both units. The high pressure L.P. tank regulator is still required when using L.P. gas tank.

If the Side Burner is a Model CB-1 or CB-2 suitable for mounting onto a Free standing mobile Lynx Grill, the interconnecting flexible hose and fittings as shown below are supplied as standard. If the Side Burner is to be built-in then interconnection pipe work / fittings are not supplied by Lynx.

L.P. GAS HOOK-UP



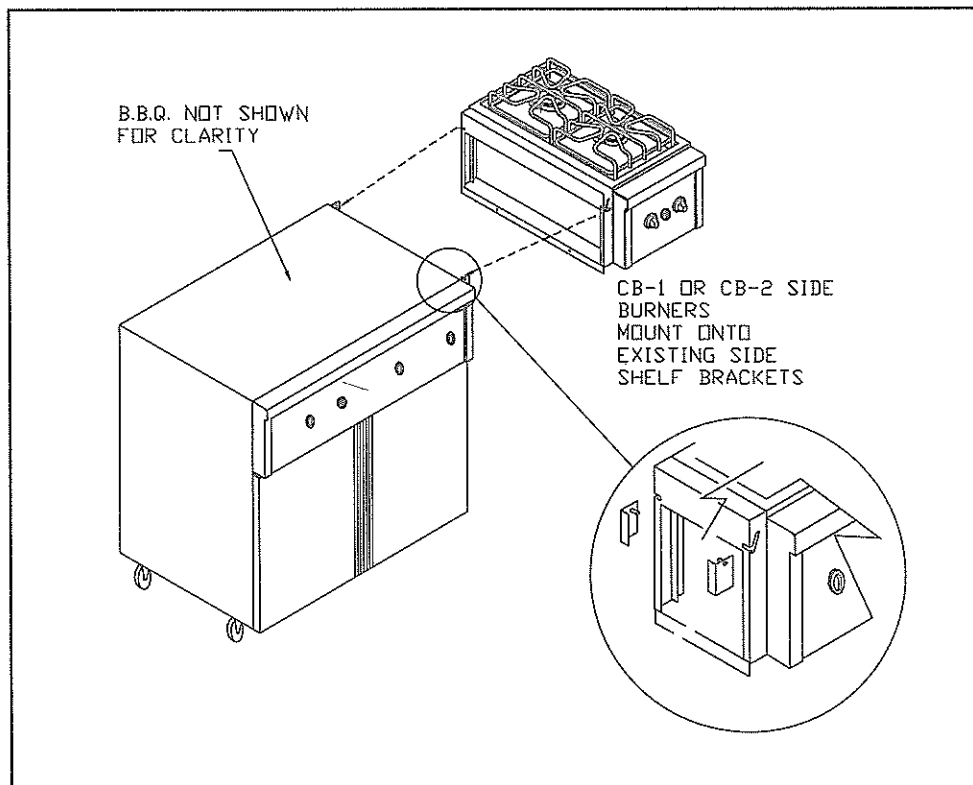
NATURAL GAS HOOK-UP



SUPPLIED WITH CB UNITS ONLY

TO INSTALL THE CB-1 OR THE CB-2 TO AN EXISTING
FREE STANDING B.B.Q. FOLLOW THESE SIMPLE STEPS:

1. Remove the RIGHT HAND side shelf from the cabinet base, by lifting horizontally and sliding away from the brackets.
2. Drill a 1/4" diameter hole in the right hand side panel of the mobile cabinet for the interconnecting gas supply.
3. Position the new side burner CB-1 or CB-2 in line with the existing side shelf brackets and slide the CB-1 or CB-2 side mounting bracket over the mounting pins of the existing brackets.
4. Push down fully the side burner bracket on the mounting pins to it's correct position ensuring it is aligned with the B.B.Q. horizontally.
5. Mark the location of the 3/16" holes on the bottom side plate of the side burner mounting bracket and drill corresponding holes in the side panel of the B.B.Q. cabinet.
6. Fit the two fixing bolts to secure the side burner mounting bracket to the side panel of the B.B.Q. cabinet.
7. Make the necessary gas connection to the side burner inlet manifold as shown in the illustration on the previous page.
8. Fully test the gas installation for leaks.



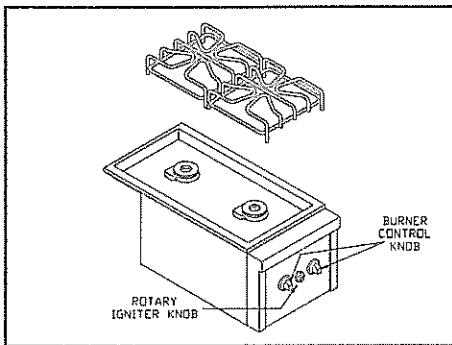
LIGHTING THE SIDE BURNER

WARNING: Important before lighting

Before attempting to light your Side Burner, inspect the hose or Gas supply piping. If there is evidence of cuts, wear or abrasion it must be replaced prior to use. Contact your local Lynx dealer for replacement parts.

Always keep your face and body away from the Side Burner when attempting to light.

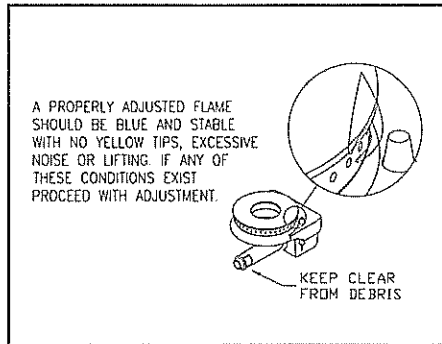
Do not attempt to light the Side Burner if the odor of Gas is present. Check for leaks using soapy water, or call for service.



LIGHTING THE BURNERS

Ensure that the gas supply is turned "on"

To light the Side Burners, push in the control knob and turn to the "lite" position and immediately turn the rotary igniter knob next to the control knob. A clicking sound should be heard from the igniter. At this time a spark will be provided to the Side Burner. It may be necessary to turn the rotary igniter knob several times until the burner gas ignites. If the burner does not light after five seconds turn the burner control knob to the "off" position and wait for two minutes before attempting to light the burner again.



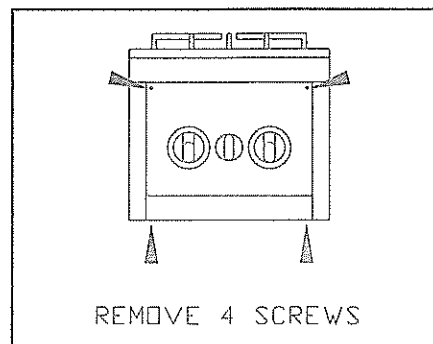
ADJUSTMENTS & EFFICIENCY

Each Side Burner is factory tested and adjusted for correct operation prior to shipment. However, due to variations in the location, conditions and/or gas supply, minor adjustments maybe necessary. Flames should be blue and stable with no yellow tips, excessive noise or lifting. If any of these conditions exist, check that the Venturi, (Burner throat) and burner ports are not blocked by dirt, debris, or insect nests.

ADJUSTMENTS

Should adjustments be necessary the access to the burner Venturi can be made by the removal of the front panel as follows:

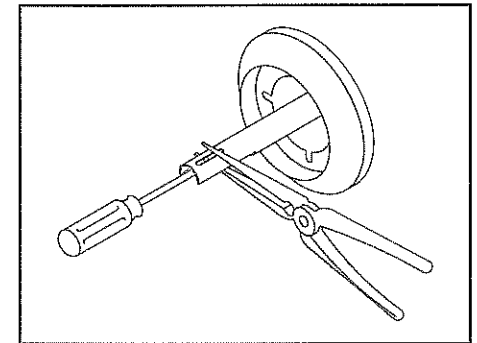
- Remove the two screws from the top of the panel and two from the lower edge. Remove the burner control knobs and igniter knob. Pull the panel out from the bottom edge.
- After checking for an obstruction, and removing any debris or insect nests, replace the panel to its original position. Replace and tighten the fixing screws and replace all knobs.



LOW SETTING ADJUSTMENT

The valves on your Lynx Side Burners feature an adjustable "low" setting. Due to fluctuations in gas composition or heating value, it may be necessary to increase or decrease the gas flow in the low setting.

Begin the low setting adjustment by lighting the burner. Turn the control valve knob to the lowest setting, then remove the knob. While holding the valve shaft with pliers, insert a thin, flat screwdriver into the shaft (see Diagram). Turn the screwdriver while watching the flame and adjust to the minimum stable position.



FOR YOUR SAFETY

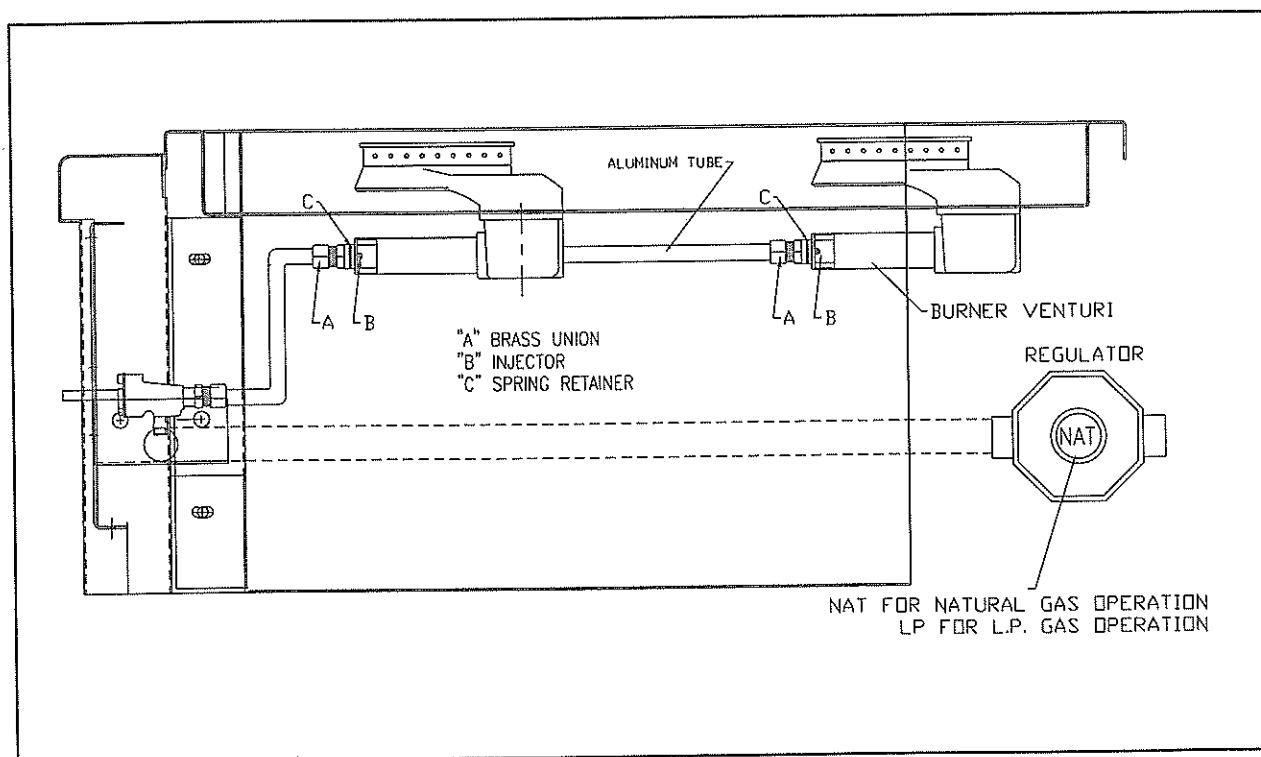
DO NOT store or use gasoline or other flammable vapors and liquids in the vicinity of this or any other appliance.

This Lynx Side Burners conforms with the requirements of the standard for outdoor gas appliances. Complies with ANSI 221.58-1995 and CAN/CGA 1-1.1.6-M95.

NEVER LEAVE THE SIDE BURNERS UNATTENDED WHILE COOKING

TO CONVERT THE SIDE BURNER FROM NATURAL GAS TO L.P. GAS OR FROM L.P. GAS TO NATURAL GAS FOLLOW THESE SIMPLE STEPS:

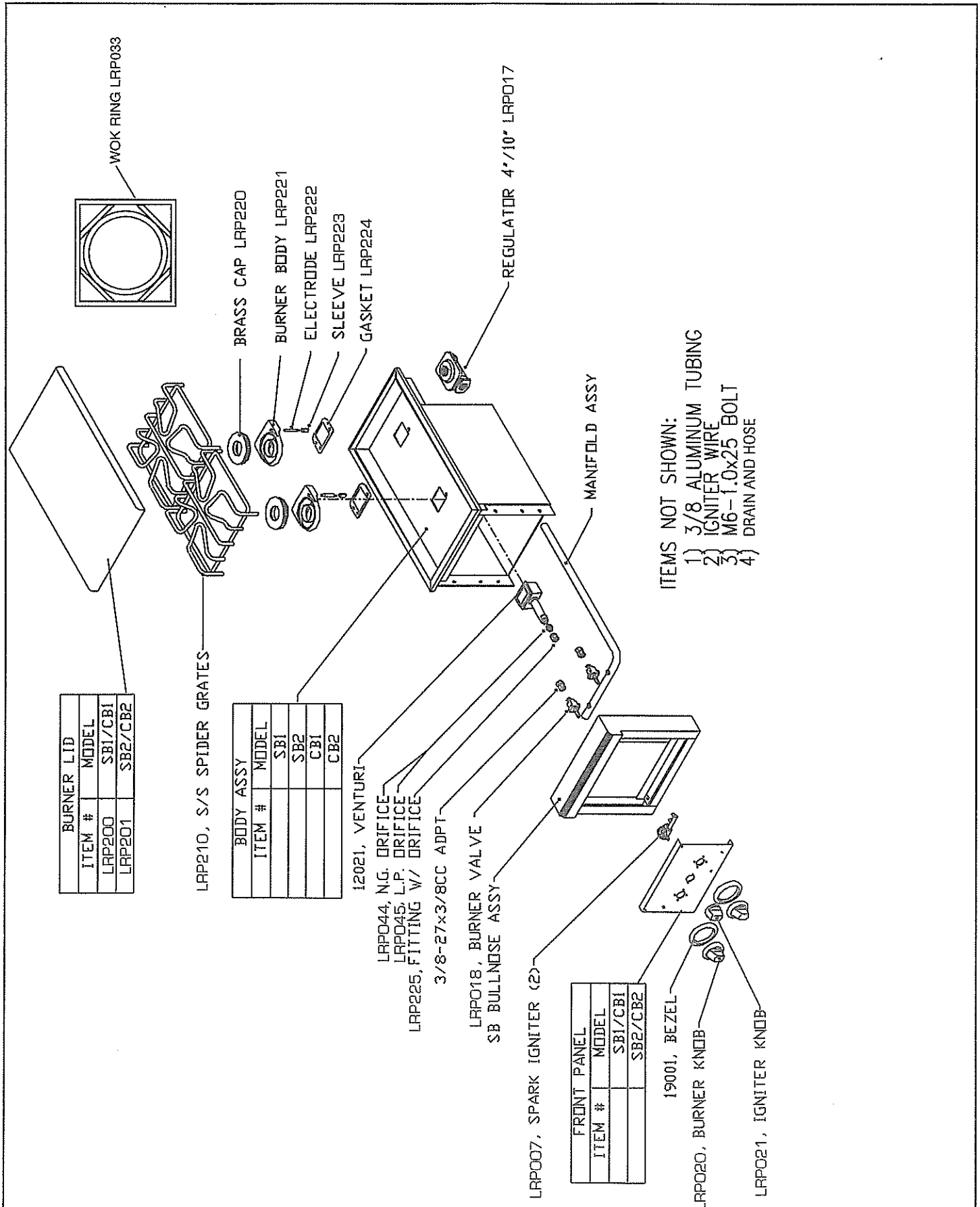
1. Ensure that the main Gas supply to the unit is turned "OFF"
2. Convert the appliance regulator by turning over the brass cap located in the top of the regulator. The letters "NAT" must face upward for Natural Gas operation, or the letters LP must face upward for LP Gas operation.
3. Remove the Burner control knobs and the igniter knob by pulling away from the front panel.
4. Remove the front panel by removing the four screws, two on the front face and two on the bottom flange.
5. Disconnect the brass fitting "A" and remove the aluminum tube.
6. Squeeze together the spring retainer clip and remove the brass fitting from the burner Venturi.
7. Screw out the existing injector and replace with the alternate gas group injector.
8. Refit the brass fitting into the burner Venturi.
9. Reattach the aluminum tube and reconnect the brass fitting ensuring that it is tightened sufficiently.
10. Repeat steps 4 through 8 should you have a double burner for the second burner.
11. After testing for gas leaks once the main gas supply is turned "on" and no leaks are found - refit the front panel and control knobs.

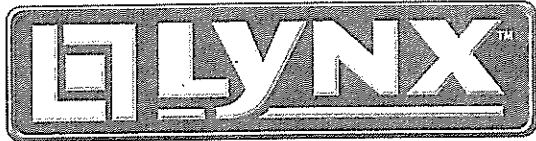


LP GAS INJECTOR SIZE:- 110
NATURAL GAS INJECTOR SIZE:- 180



SPARE PARTS LIST





**LYNX PROFESSIONAL KITCHEN PRODUCTS,
A DIVISION OF BECA EQUIPMENT**



6023-25 EAST BANDINI BLVD., COMMERCE, CA 90040
(888)BUY-LYNX (289-5969) • (323) 838-1779 • FAX (323) 838-1782

REV. 4/00 email:becalynx@aol.com